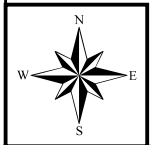
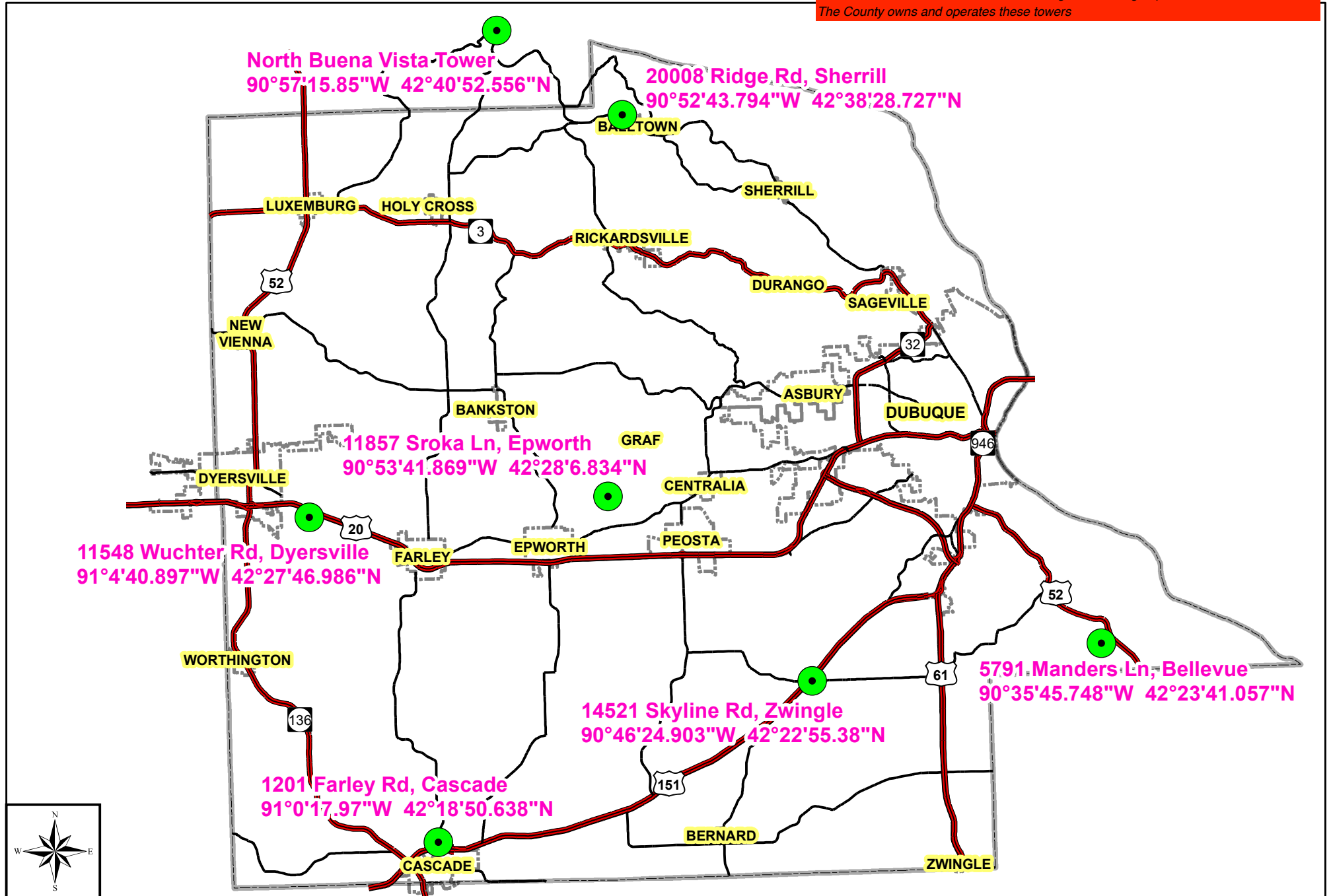


Racom Radio Towers

Dubuque County built towers to support a new radio system for LEO in 2020
Each one was overbuilt to support private sector ISP
All of them are available at this time for long term leasing to promote broadband services
The County owns and operates these towers



0 2.5 5 Miles



Alliant Tower
200 First Street SE
P.O. Box 351
Cedar Rapids, IA 52406-0351

Office: 1.800.255-4268
www.alliantenergy.com

Nathan Gilmore
IT Director
Dubuque County
Nathan.Gilmore@DubuqueCountyIowa.gov

Dear Mr. Gilmore:

Interstate Power and Light Company ("IPL"), a subsidiary of Alliant Energy Corporation, is interested in the Old Hwy 20 middle-mile fiber project in Dubuque County from Epworth to Dyersville. Alliant Energy has fiber installed east of Epworth to the City of Dubuque; this fiber segment has dark fiber available for lease. To meet the 2023 in-service date, of the Old Hwy 20 middle-mile fiber project, project details such as agreements and proposed routing will need to be finalized and approved before the end of year 2022.

IPL recognizes multiple benefits of coordinating and developing middle-mile fiber systems and "Dig-Once" opportunities. In addition to the Old Hwy 20 middle-mile fiber project, IPL would like to identify and evaluate more fiber opportunities within Dubuque County.

IPL is excited about the potential project synergies, opportunities, and benefits middle-mile fiber can provide residents of Dubuque County.

Please note that this letter reflects the state of ongoing discussions, and is not intended to be, and is not, a binding contract. A binding commitment with respect to the project referenced herein will result only if and when the definitive agreements are executed and delivered by IPL or its affiliate.

A handwritten signature in cursive script that reads "Mayuri Farlinger".

Mayuri Farlinger
Vice President – Customer & Community Engagement
Alliant Energy
1001 Shaver Road NE | Cedar Rapids, IA 52402
MayuriFarlinger@alliantenergy.com

FW: SAMPLE- MVEC Letter of Support for DBQ co Middle Mile

Jeff Geistkemper <JGeistkemper@mvec.com>

Mon 6/13/2022 1:13 PM

To: Nathan Gilmore <Nathan.Gilmore@dubuquecountyowa.gov>

Nathan,

MVEC would be in support of your "Middle Mile" project that would take place along the heritage trail. Specifically MVEC would potentially have interest in the section between NW Arterial & Graf City Park.

MVEC Is not committing to leasing fiber or conduit until the rates of the lease are established. MVEC has no need for any conduit or Fiber west of Graf City Park at this time.

Please feel free to reach out to us with any questions.

Jeff Geistkemper
Fiber Plant Manager
Maquoketa Valley Electric Cooperative
1-319-820-0358



RE: MiddleMile - Final Worksession - If you want to submit anything for support - need it by Wednesday morning 900am

Bernard Dutchik <bernard.dutchik@imon.net>

Tue 7/19/2022 9:38 AM

To: Nathan Gilmore <Nathan.Gilmore@dubuquecountyiowa.gov>

Nathan Gilmore

IT Director

Dubuque County

Nathan.Gilmore@DubuqueCountyIowa.gov

Mr. Gilmore:

ImOn Communications is in support of your efforts to increase the middle mile infrastructure in Dubuque County. ImOn recognizes the multiple benefits of coordinating and developing middle-mile fiber systems and any corresponding "Dig-Once" opportunities. ImOn is very interested in continuing discussions about the potential project synergies, opportunities, and benefits middle-mile fiber can provide the residents and businesses of Dubuque County.

Please note that this letter is not intended to be, and is not, a binding contract. Any commitments concerning the project referenced and future projects will occur only if and when the definitive agreements are formally agreed to by ImOn Communications.

Thank you,
Bernard Dutchik

Bernard Dutchik

Vice President of Network Operations & Engineering

ImOn Communications

101 3rd Ave SW, Suite 200

Cedar Rapids, IA 52404

Office: (319) 200-4937

Fax: (319) 261-4636

Email: bernard.dutchik@imon.net



From: Nathan Gilmore <Nathan.Gilmore@dubuquecountyiowa.gov>

Sent: Monday, July 18, 2022 4:15 PM

Subject: MiddleMile - Final Worksession - If you want to submit anything for support - need it by



Control Number 507526
Comelec Internet Services

4190 Pennsylvania Ave.

Dubuque, IA 52002

(563) 557-8442

www.comelecinternet.com

Nathan

Comelec is in support of a Dubuque County Middle Mille concept. However the Heritage trail and Old Hwy corridor paths seem redundant since several providers have paths there already.

Comelec is in support of a north to northwestern path heading towards Sageville, Sherrill, Balltown, Rickardsville, Holy Cross, Bankston, Luxemburg and New Vienna. This would enable providers to have potential paths to upgrade small communities with fiber that have limited provider options. A possible combination of Hwy 3, Heritage Trail and Sherrill Road path.

A handwritten signature in blue ink that reads "Tim Burbach". The signature is fluid and cursive, with a long horizontal stroke at the end.

Tim burbach

President

Comelec Services

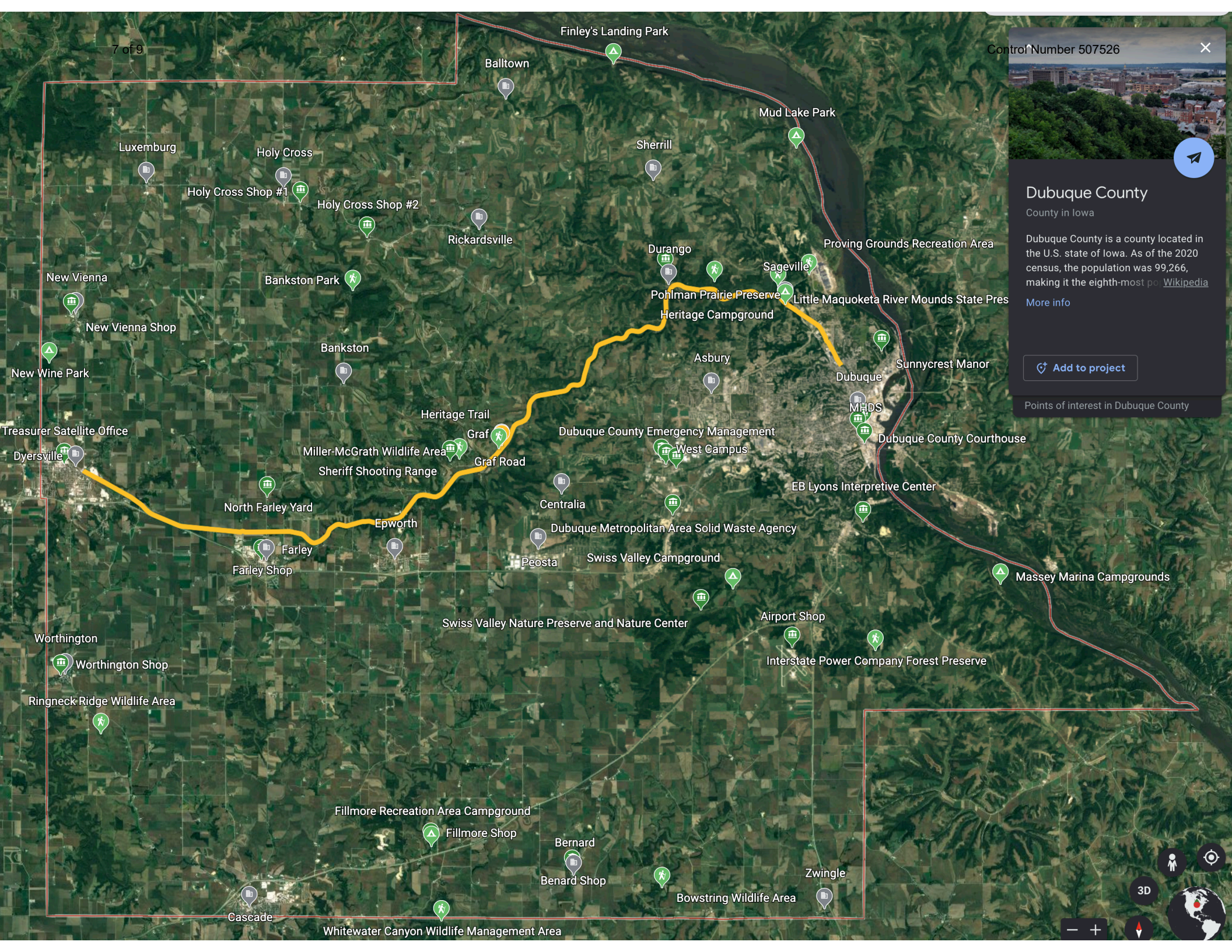
On March 20th, 2023 the Dubuque County Board of Supervisors allocated \$150,000 for the purpose of hiring an engineering firm to develop bid ready documents for conduit and fiber along the Heritage Trail, twenty-six miles of it.

This document will be developed closely with the local ISPs providing input and anchor institutions so as to maximize the value and generational design.

The trail passes along numerous anchor institutions and cities. It is a perfect east/west corridor to build a resilient fiber backbone for multiple ISPs and government services.

For purpose of this application I am drawing attention to Durango and Sageville but if State was open to a larger discussion about how to build this trail proposal I am confident I could get the Supervisors on board to build something generational for the good of the citizens and county.

-Nathan Gilmore – IT Director Dubuque County



7 of 9

Control Number 507526



Dubuque County

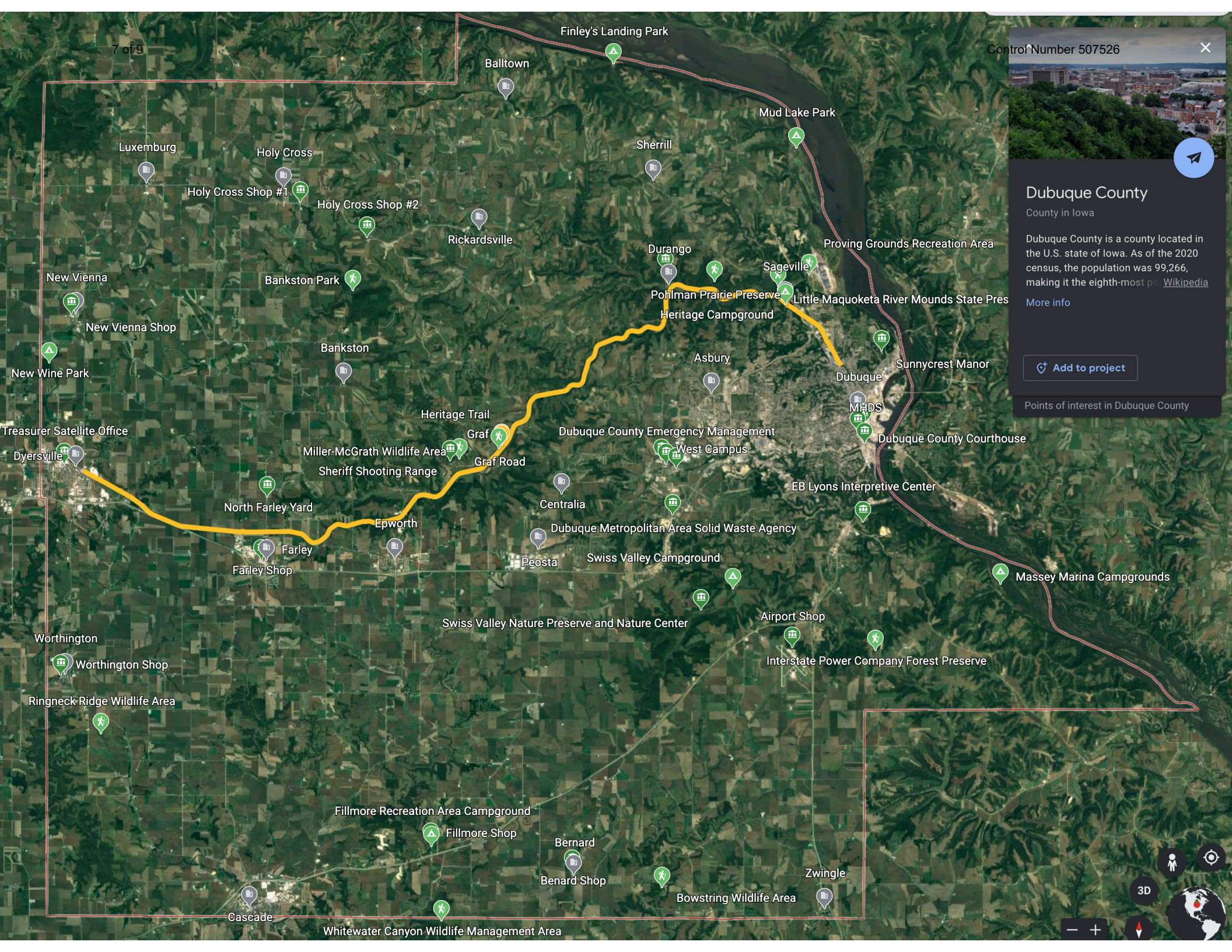
County in Iowa

Dubuque County is a county located in the U.S. state of Iowa. As of the 2020 census, the population was 99,266, making it the eighth-most pop. [Wikipedia](#)

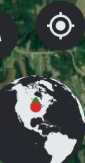
[More info](#)

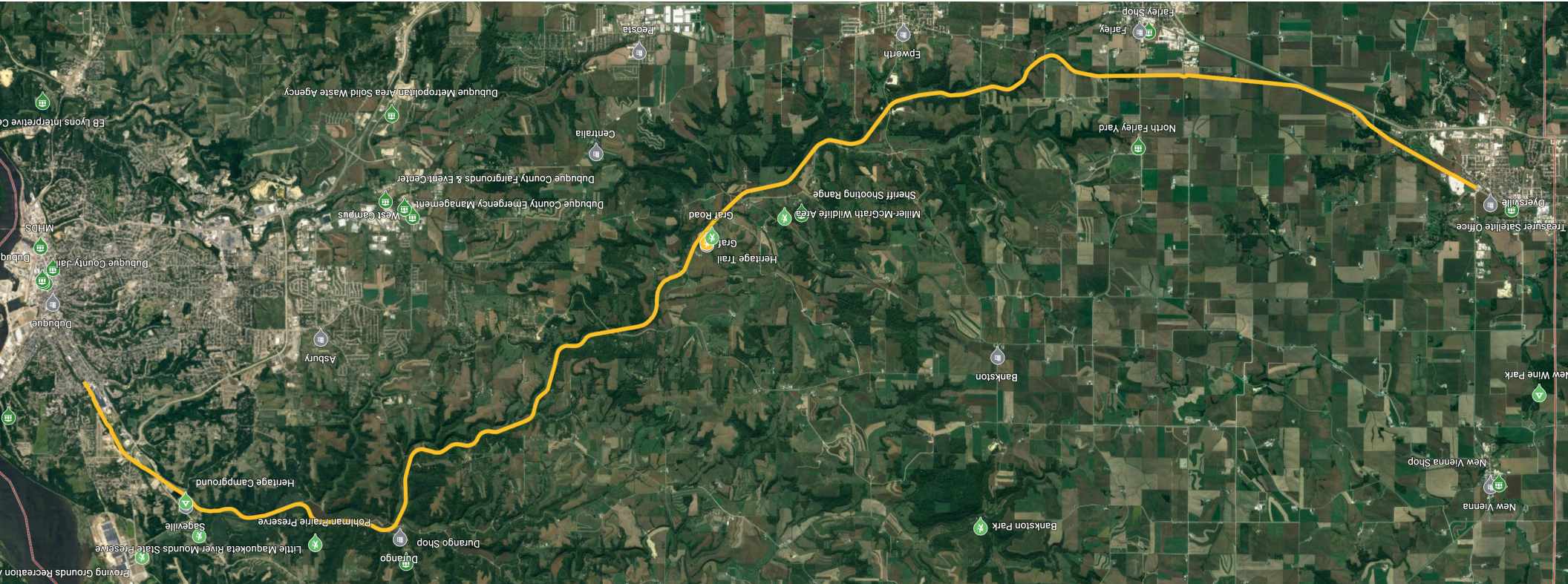
[Add to project](#)

Points of interest in Dubuque County



3D





 Crushed Limestone

 Paved

A circular diagram representing a trail with five stations. The stations are labeled around a central circle: PARKING (top-left), PICNIC SHELTER (middle-left), RESTROOM (bottom), WATER FOUNTAIN (middle-right), and FIXIT STATION (top-right). The central circle contains a white silhouette of a person riding a bicycle on a black background.

 Main Trail Access Restrooms Canoe Launch

Control Number 507526

